

UNIT SIZE	IMPERIAL UNITS (inches)			
	STANDARD COILS			
	B	C	CONNECTION SIZES	
			1 ROW	2 ROW
20	12	10	1/2	7/8
30	21	10	1/2	7/8
40	21	12 1/2	7/8	7/8

UNIT SIZE	SI UNITS (mm)			
	STANDARD COILS			
	B	C	CONNECTION SIZES	
			1 ROW	2 ROW
20	305	254	13	22
30	533	254	13	22
40	533	318	22	22

NOTES:

- FABRICATED FROM 22 GA. GALVANIZED STEEL. MECHANICALLY SEALED, LEAK RESISTANT CONSTRUCTION.
- HOT WATER COILS HAVE COPPER TUBES AND ALUMINUM FINNS WITH O.D. SWEAT CONNECTIONS.
- REFER TO SUBMITTED TERMINAL UNIT SCHEDULE FOR AIR VOLUMES AND HOT WATER COIL CAPACITIES.
- METHOD OF VENTING HOT WATER COIL IS TO BE PROVIDED BY INSTALLING CONTRACTOR
- SLIP & DRIVE FLANGED ADAPTOR REQUIRED TO ATTACH HOT WATER COILS TO FANS.
- HAND OF HOT WATER COIL CONNECTIONS IS DETERMINED WHEN VIEWED FROM AIR INLET SIDE. RIGHT HAND COIL CONNECTION IS ILLUSTRATED ABOVE.
- ALLOW 1 1/2 " (38) MINIMUM CLEARANCE FOR INSTALLATION AT THIS END.
- WATER COILS ARE MOUNTED ON RETURN AIR INLET.
- PERFORMANCE RATED AND CERTIFIED IN ACCORDANCE WITH THE CURRENT EDITION OF ARI STANDARD 410.
- STANDARD COILS SUPPLIED WITH 12 FINNS PER INCH.

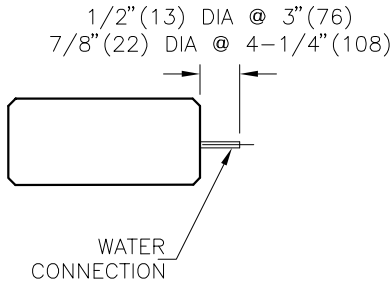
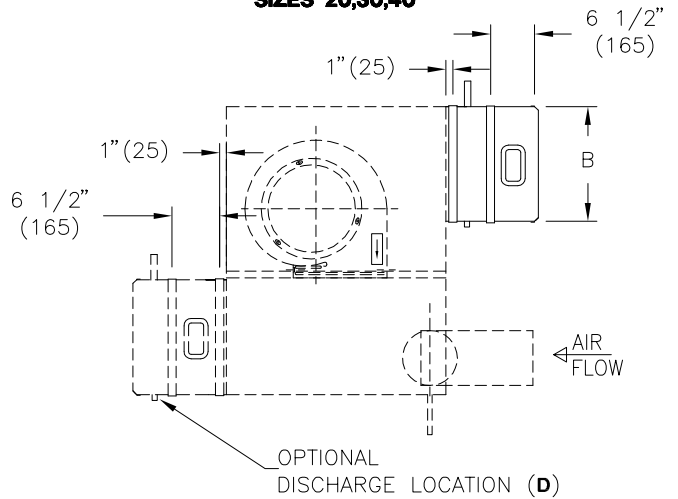
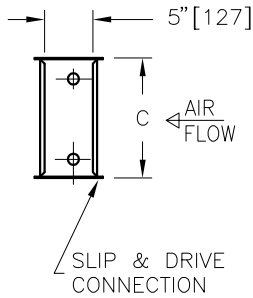
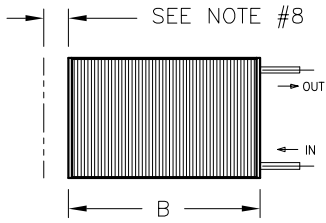
OPTIONS:

- D - DISCHARGE COIL LOCATION

ALL METRIC DIMENSIONS () ARE SOFT CONVERTED. IMPERIAL DIMENSIONS ARE CONVERTED TO METRIC AND ROUNDED TO THE NEAREST MILLIMETER.

PROJECT:		PRICE®	
ENGINEER:		GF	HOT WATER COILS FAN POWERED TERMINALS FPVLP, FEVLP, FDVLP 1-ROW OR 2-ROW SIZES 20-40
CUSTOMER:		237120	
SUBMITTAL DATE:	SPEC. SYMBOL:	2015/10/02	

SIZES 20,30,40



CAD—ACCESS DOOR W/SCREWS
4" (102) x 6 3/4" (171)

CADL—ACCESS DOOR
W/SNAP LATCHES
4" (102) x 6 3/4" (171)

CADQ — COIL ACCESS DOOR
W/QUARTER TURN SASH LATCHES
4" (102) x 6 3/4" (171)

UNIT SIZE	IMPERIAL UNITS (inches)			
	STANDARD COILS		CONNECTION SIZES	
	B	C	1 ROW	2 ROW
20	12	10	1/2	7/8
30	21	10	1/2	7/8
40	21	12 1/2	7/8	7/8

UNIT SIZE	SI UNITS (mm)			
	STANDARD COILS		CONNECTION SIZES	
	B	C	1 ROW	2 ROW
20	305	254	13	22
30	533	254	13	22
40	533	318	22	22

NOTES:

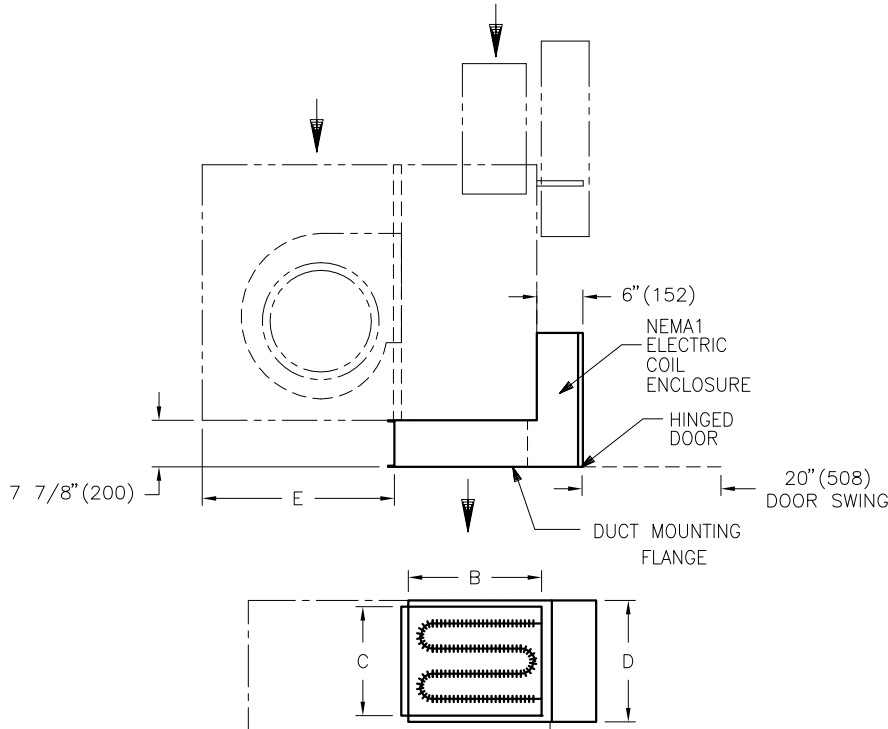
- FABRICATED FROM 22 GA. GALVANIZED STEEL. MECHANICALLY SEALED, LEAK RESISTANT CONSTRUCTION.
- HOT WATER COILS HAVE COPPER TUBES AND ALUMINUM FINS WITH O.D. SWEAT CONNECTIONS.
- REFER TO SUBMITTED TERMINAL UNIT SCHEDULE FOR AIR VOLUMES AND HOT WATER COIL CAPACITIES.
- METHOD OF VENTING HOT WATER COIL IS TO BE PROVIDED BY INSTALLING CONTRACTOR
- SLIP & DRIVE FLANGED ADAPTOR REQUIRED TO ATTACH HOT WATER COILS TO FANS.
- QUICK OPENING ACCESS DOOR FOR INSPECTION AND MAINTENANCE OF COIL IS FEATURED.
- HAND OF HOT WATER COIL CONNECTIONS IS DETERMINED WHEN VIEWED FROM AIR INLET SIDE. RIGHT HAND COIL CONNECTION IS ILLUSTRATED ABOVE.
- ALLOW 1 1/2" (38) MINIMUM CLEARANCE FOR INSTALLATION AT THIS END.
- WATER COILS ARE MOUNTED ON RETURN AIR INLET.
- PERFORMANCE RATED AND CERTIFIED IN ACCORDANCE WITH THE CURRENT EDITION OF ARI STANDARD 410.
- STANDARD COILS SUPPLIED WITH 12 FINS PER INCH.

OPTIONS:

- D — DISCHARGE COIL LOCATION

ALL METRIC DIMENSIONS () ARE SOFT CONVERTED. IMPERIAL DIMENSIONS ARE CONVERTED TO METRIC AND ROUNDED TO THE NEAREST MILLIMETER.

PROJECT:		PRICE®	
ENGINEER:		GF	HOT WATER COILS FAN POWERED TERMINALS FPVLP, FDVLP WITH ACCESS DOOR SIZES 20-40
CUSTOMER:		237121	
SUBMITTAL DATE:	SPEC. SYMBOL:	2015/10/01	



UNIT SIZE	OUTLET DUCT SIZE B x C	D	E
20	12x9 (305x229)	10½ (267)	18¾ (476)
30	17x9 (432x229)	10½ (267)	21¼ (540)
40	21x11 (533x279)	12½ (318)	21 (533)

SIZES 20-40

SEE CATALOGUE FOR DETAILED AIR FLOW RANGE AND CAPACITY.

STANDARD FEATURES

- HINGED ACCESS DOOR
- AUTOMATIC RESET THERMAL CUTOUT
- MANUAL RESET THERMAL CUTOUT
- FAN INTERLOCKED WITH HEATING ELEMENTS
- MAGNETIC CONTACTORS WHERE REQUIRED
- 20 GA. GALVANIZED STEEL CONSTRUCTION.
- HIGH GRADE NICKEL CHROME HEATING ELEMENTS
- REFER TO SUBMITTED CONTROL DIAGRAMS FOR STANDARD CONTROL COMPONENTS TO BE SUPPLIED
- SINGLE POINT ELECTRICAL CONNECTION, EXCEPT SEPARATE POWER SUPPLY FOR 600/3Ø/3 WIRE
- SUPPLY VOLTAGE:
 - 115/1Ø
 - 208/3Ø (4 WIRE)
 - 208/1Ø (3 WIRE)
 - 480/3Ø (4 WIRE)
 - 240/1Ø
 - 600/3Ø (3 OR 4 WIRE)
 - 277/1Ø
 - 480/1Ø (3 WIRE)

OPTIONAL FEATURES

- AIR FLOW SWITCH
- CHICAGO CONSTRUCTION (CBC2000)
- CONTROL CIRCUIT FUSE
- DOOR INTERLOCK DISCONNECT SWITCH
- MAIN SUPPLY FUSES
- MOTOR FUSE
- MERCURY CONTACTORS
- PSG – Price Silent Guard™ CONTROLLER
- SCR CONTROLS SCR-DAT CONTROLS * SEE NOTE
 - 0 to 10 Vdc CONTROL SIGNAL
 - 4 to 20 mA CONTROL SIGNAL
 - 24 VAC PULSE CONTROL
- DP – DUAL POINT POWER CONNECTION

NOTES

- 70 CFM PER KW MINIMUM AIR FLOW ACROSS HEATER COILS.
- MINIMUM 0.2" w.g.(50 Pa) EXTERNAL STATIC PRESSURE TO OPERATE.
- ASSEMBLY ETL CERTIFIED TO UL1995 & CSA236.
- FOR SCR OPTION WITH PNEUMATIC CONTROL SIGNAL CONTACT PRICE.

ALL METRIC DIMENSIONS () ARE SOFT CONVERTED. IMPERIAL DIMENSIONS ARE CONVERTED TO METRIC AND ROUNDED TO THE NEAREST MILLIMETER.

PROJECT:		PRICE®
ENGINEER:		
CUSTOMER:		BG
SUBMITTAL DATE:		237233
SPEC. SYMBOL:		2012/05/28
		ELECTRIC COILS VARIABLE VOLUME LOW PROFILE TERMINALS SIZES 20 – 40

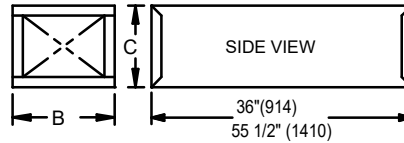
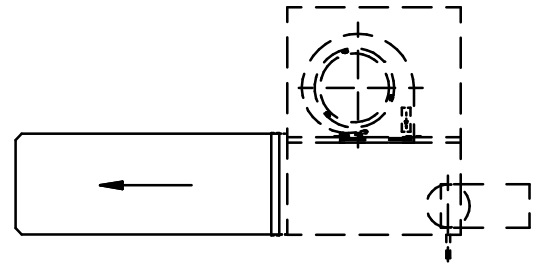
DISCHARGE ATTENUATOR SECTION (DAS-3FT OR DAS5-5FT)

W/OUT WATER COIL

SIZE	IMPERIAL UNITS		S.I. UNITS	
	B	C	B	C
20	12	10	305	254
30	17	9	432	229
40	21	11	533	279

WITH WATER COIL

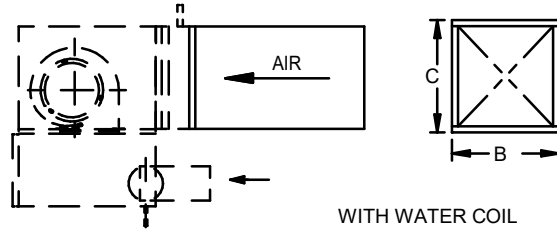
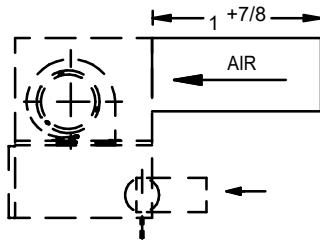
SIZE	IMPERIAL UNITS		S.I. UNITS	
	B	C	B	C
20	12	10	305	254
30	21	10	533	254
40	21	12Ø	533	318



OPTIONS: LINERS: FF50 FB

- 22GA. ZINC COATED STEEL HOUSING MECHANICALLY SEALED AND GASKETED, LEAK RESISTANT CONSTRUCTION.
- INTERNAL INSULATION - Ø" (13)THICK, MIN. 1.5# DENSITY WHICH MEETS REQUIREMENTS OF NFPA 90A AND UL181.

INLET ATTENUATOR SECTION (IAS)



W/OUT WATER COIL

SIZE	IMPERIAL UNITS		S.I. UNITS	
	B	C	B	C
20	20	10Ø	508	267
30	20	10Ø	508	267
40	20	12Ø	508	318

WITH WATER COIL

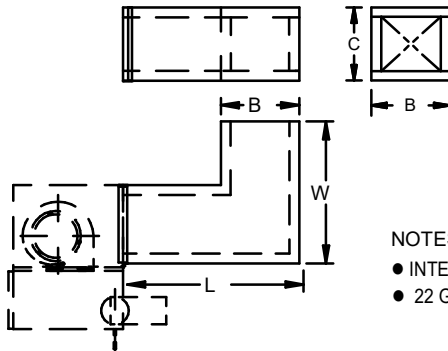
SIZE	IMPERIAL UNITS		S.I. UNITS	
	B	C	B	C
20	12	10	305	254
30	21	10	533	254
40	21	12Ø	533	318

OPTIONS:

LINERS: FB FF50 - 1/2" (13) THICK

- 22GA. ZINC COATED STEEL HOUSING MECHANICALLY SEALED AND GASKETED, LEAK RESISTANT CONSTRUCTION.
- INTERNAL INSULATION - 2" (51)THICK, MIN. 1.5# DENSITY WHICH MEETS REQUIREMENTS OF NFPA 90A AND UL181.

90° INLET ATTENUATOR (IAS90)



W/OUT WATER COIL

SIZE	IMPERIAL UNITS (SI UNITS)			
	B	C	L	W
20/30	20 (508)	10Ø (267)	30 (762)	30 (762)
40	20 (508)	12Ø (318)	30 (762)	30 (762)

WITH WATER COIL

SIZE	IMPERIAL UNITS (SI UNITS)			
	B	C	L	W
20	12 (305)	10 (254)	30 (762)	30 (762)
30	21 (533)	10 (254)	30 (762)	30 (762)
40	21 (533)	12Ø (318)	30 (762)	30 (762)

NOTES:

- INTERNAL INSULATION 2"(51) DUAL DENSITY WHICH MEETS REQUIREMENTS OF NFPA 90A & UL-181.
- 22 GA. GALVANIZED STEEL HOUSING. MECHANICALLY SEALED LEAK RESISTANT CONSTRUCTION.

GENERAL NOTES:

- ATTENUATORS SHIPPED LOOSE WITH SLIP AND DRIVE CLEATS OR MOUNTING ANGLES WHERE REQUIRED.

ALL METRIC DIMENSIONS () ARE SOFT CONVERTED. IMPERIAL DIMENSIONS ARE CONVERTED TO METRIC AND ROUNDED TO THE NEAREST MILLIMETER.

PROJECT:

ENGINEER:

CUSTOMER:

SUBMITTAL DATE:

SPEC. SYMBOL:

PRICE

ATTENUATORS

FAN POWERED TERMINALS

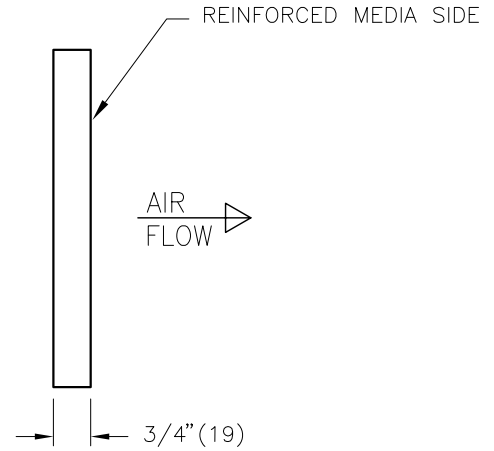
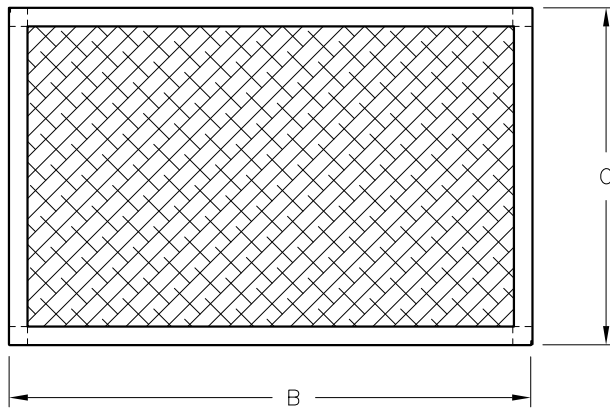
FPVLP, FEVLP, FDVLP

SIZES 20-40

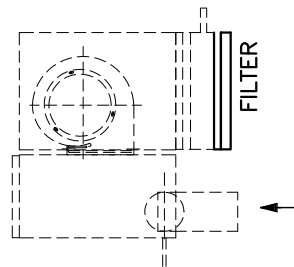
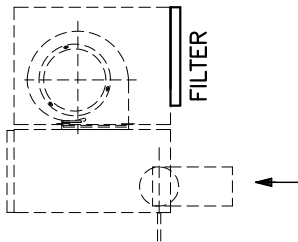
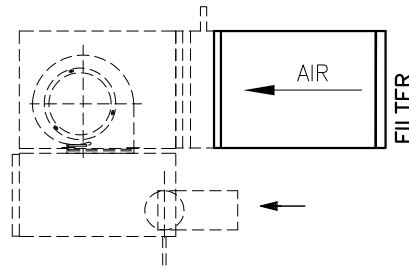
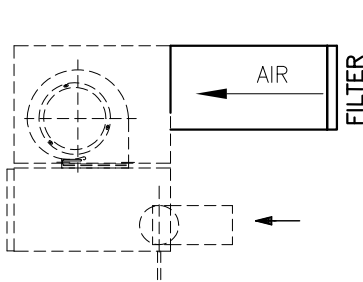
237122

12/05/2022

FILTER ASSEMBLY (FTR)



- FILTER 1" (25) FILTER MEDIA.
- CARDBOARD FRAME.
- MERV 3 RATING.



W/OUT WATER COIL

SIZE	IMPERIAL UNITS		S.I. UNITS	
	B	C	B	C
20	20	10 ³ / ₈	508	264
30	20	10 ³ / ₈	508	264
40	20 ⁷ / ₈	12 ¹ / ₄	530	311

WITH STANDARD WATER COIL

SIZE	IMPERIAL UNITS		S.I. UNITS	
	B	C	B	C
20	13 ¹ / ₂	9 ⁷ / ₈	343	251
30	22	10 ³ / ₈	559	251
40	22	12 ³ / ₈	559	314

ALL METRIC DIMENSIONS () ARE SOFT CONVERTED. IMPERIAL DIMENSIONS ARE CONVERTED TO METRIC AND ROUNDED TO THE NEAREST MILLIMETER.

PROJECT:



ENGINEER:

BG

CUSTOMER:

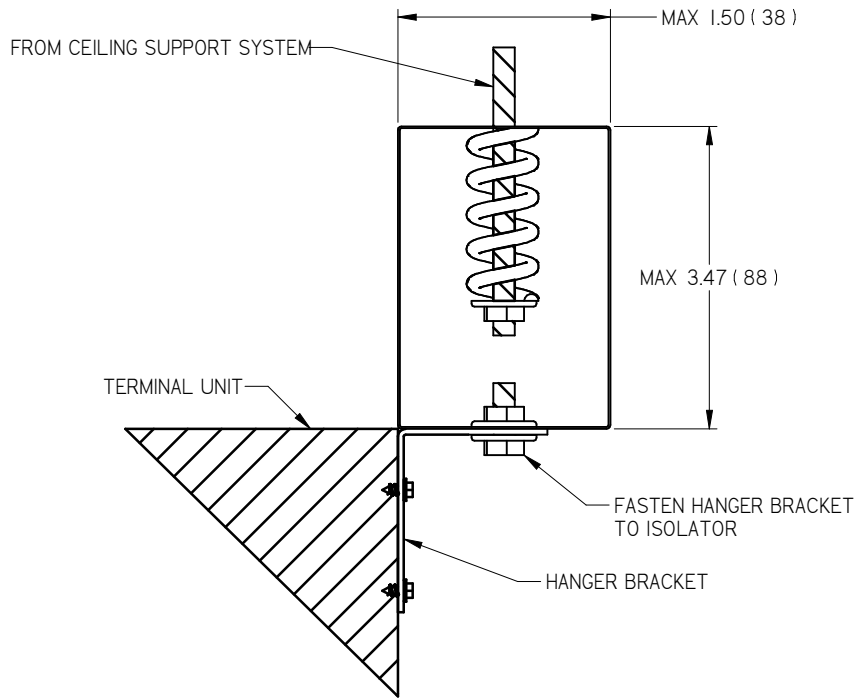
237123

SUBMITTAL DATE:

SPEC. SYMBOL:

2009/04/21

FILTERS
FAN POWERED TERMINALS
FPVLP, FEVLP, FDVLP
SIZES 20-40




PRODUCT	HBS QTY REQUIRED						
	BASE UNIT	DAS/SLR	IAS/IAS90	EC/WC	EC+SM/PM LINER	RSLR	DOAS SENSIBLE COOLING COIL
FxV 20-30	RED (X4)	RED (X2)	RED (X2)	-	RED (X2)	-	-
FxV 40-60	YELLOW (X4)	RED (X2)	RED (X2)	-	-	-	-
FxVLP 20-40	RED (X4)	RED (X2)	RED (X2)	-	-	-	-
FDCLP2 10	RED (X4)	RED (X2)	RED (X2)	-	-	-	-
FDCLP2 20-30	RED (X4)	RED (X2)	RED (X2)	RED (X2)	-	-	-
FDCLP2 50	YELLOW (X4)	RED (X2)	-	YELLOW (X2)	-	-	-
FDCLP2 50 14x8	YELLOW (X6)	RED (X2)	-	YELLOW (X2)	-	-	-
FDCLP2 DOAS 10	YELLOW (X4)	RED (X2)	-	-	-	RED (X2)	RED (X2)
FDCLP2 DOAS 20,30,50	YELLOW (X4)	RED (X2)	-	YELLOW (X2)	-	RED (X2)	RED (X2) SEE NOTE 5
FDCLP2 DOAS 50 14x8	YELLOW (X6)	RED (X2)	-	YELLOW (X2)	-	RED (X2)	RED (X2) SEE NOTE 5

NOTES:

- HANGER BRACKETS AND SPRING LOADED BRACKETS ARE SHIPPED LOOSE FOR FIELD INSTALLATION BY OTHERS
- ORIENT THE ISOLATOR AS SHOWN TO PROPERLY DAMPEN TERMINAL
- RED SPRING LOAD RANGE: 16 LBS - 35 LBS
- YELLOW SPRING LOAD RANGE: 36 LBS - 65 LBS
- FOR FDCLP2 DOAS SIZE 50 8 ROW COIL USE YELLOW (X2)

ALL METRIC DIMENSIONS () ARE SOFT CONVERTED. IMPERIAL DIMENSIONS ARE CONVERTED TO METRIC AND ROUNDED TO THE NEAREST MILLIMETER.

PROJECT:		 HBS HANGER BRACKET SPRING ISOLATION
ENGINEER:		
CUSTOMER:		
SUBMITTAL DATE:		
SPEC. SYMBOL:		241538 06/24/2020

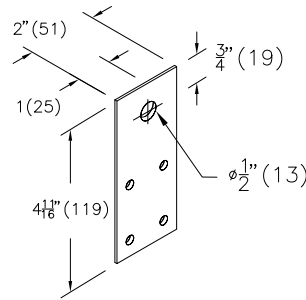
IMPERIAL UNITS (inches)

UNIT SIZE	B	D	L	W
20	12	20	24	31½
30	17	20	33	39
40	21	20	36	42¾

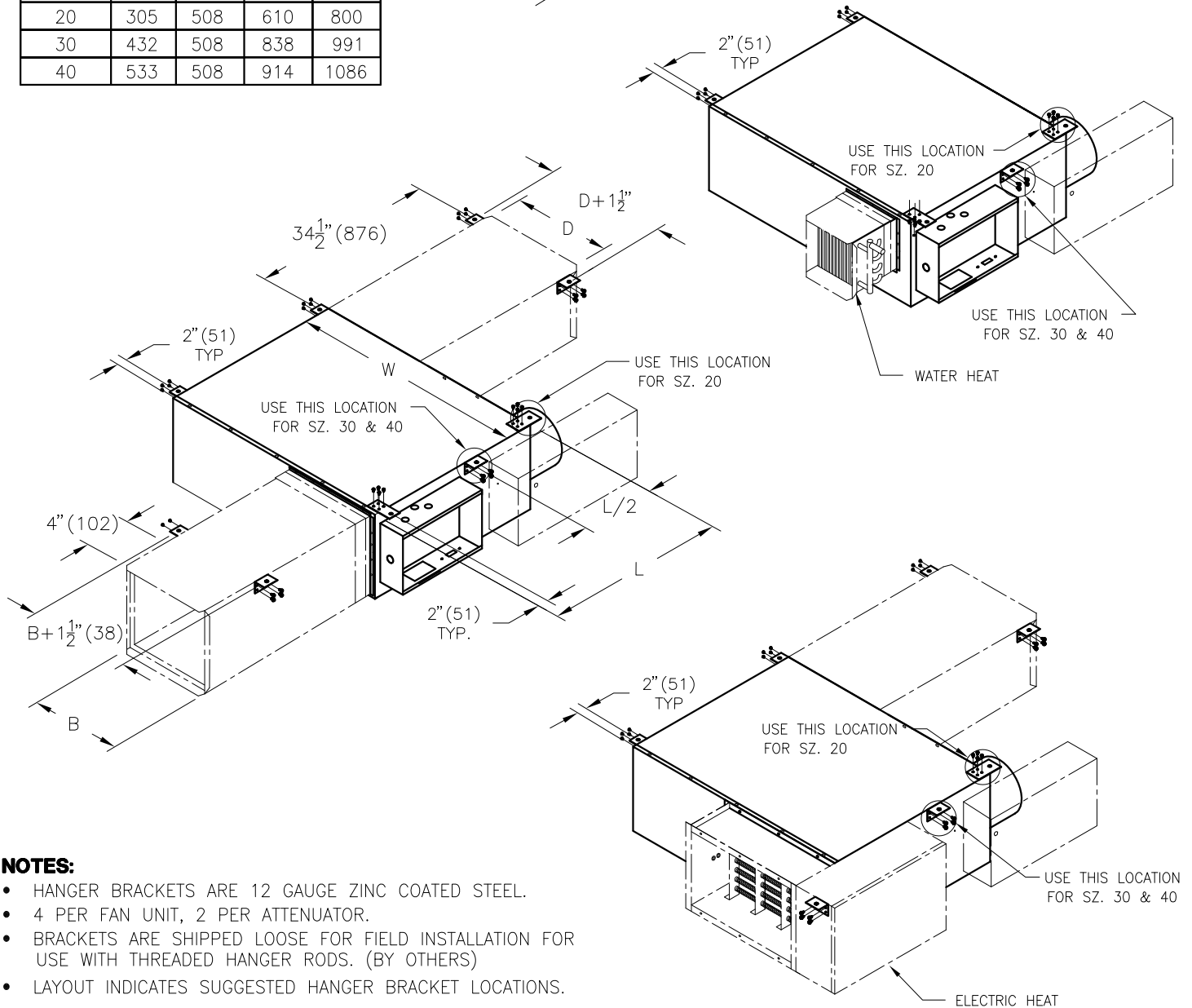
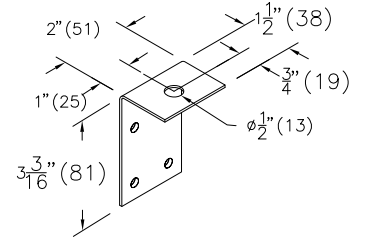
SI UNITS (mm)

UNIT SIZE	B	D	L	W
20	305	508	610	800
30	432	508	838	991
40	533	508	914	1086

FLAT HANGER BRACKET (HB)



FORMED HANGER BRACKET (HB)



NOTES:

- HANGER BRACKETS ARE 12 GAUGE ZINC COATED STEEL.
- 4 PER FAN UNIT, 2 PER ATTENUATOR.
- BRACKETS ARE SHIPPED LOOSE FOR FIELD INSTALLATION FOR USE WITH THREADED HANGER RODS. (BY OTHERS)
- LAYOUT INDICATES SUGGESTED HANGER BRACKET LOCATIONS.

ALL METRIC DIMENSIONS () ARE SOFT CONVERTED. IMPERIAL DIMENSIONS ARE CONVERTED TO METRIC AND ROUNDED TO THE NEAREST MILLIMETER.

PROJECT:

ENGINEER:

CUSTOMER:

SUBMITTAL DATE:

SPEC. SYMBOL:

PRICE®

BG

262176

2013/02/26

ACCESSORIES

HANGER BRACKETS (HB)
LOCATIONS
FOR FDVLP